

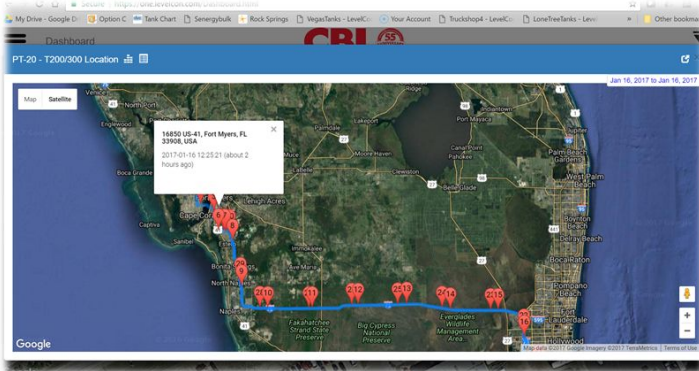
## Own your Assets

Monitor your fleet in a whole new way. With the F100 MTM-Mobile Tank Monitor, you never have to worry about missing product, ghost gallons or driver safety again. Track your assets from your production facility to the end customer and maintain control of your inventory.









With LevelCon's advanced sensor technology and telemetry system, your time-sensitive data can be aggregated from anywhere in the world and delivered to you on internet connected device.

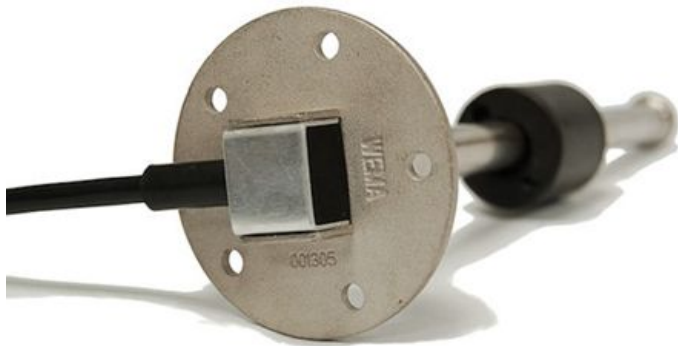
## Typical Applications

- Mobile Asset Monitoring—fuels, water, lubricants, chemicals, gases, solids
- Mobile asset GPS tracking
- Pump control for deliveries
- Flow meter pulse rate to Gallons or Liters
- Optional security video DVR system
- Transaction data-how much and where



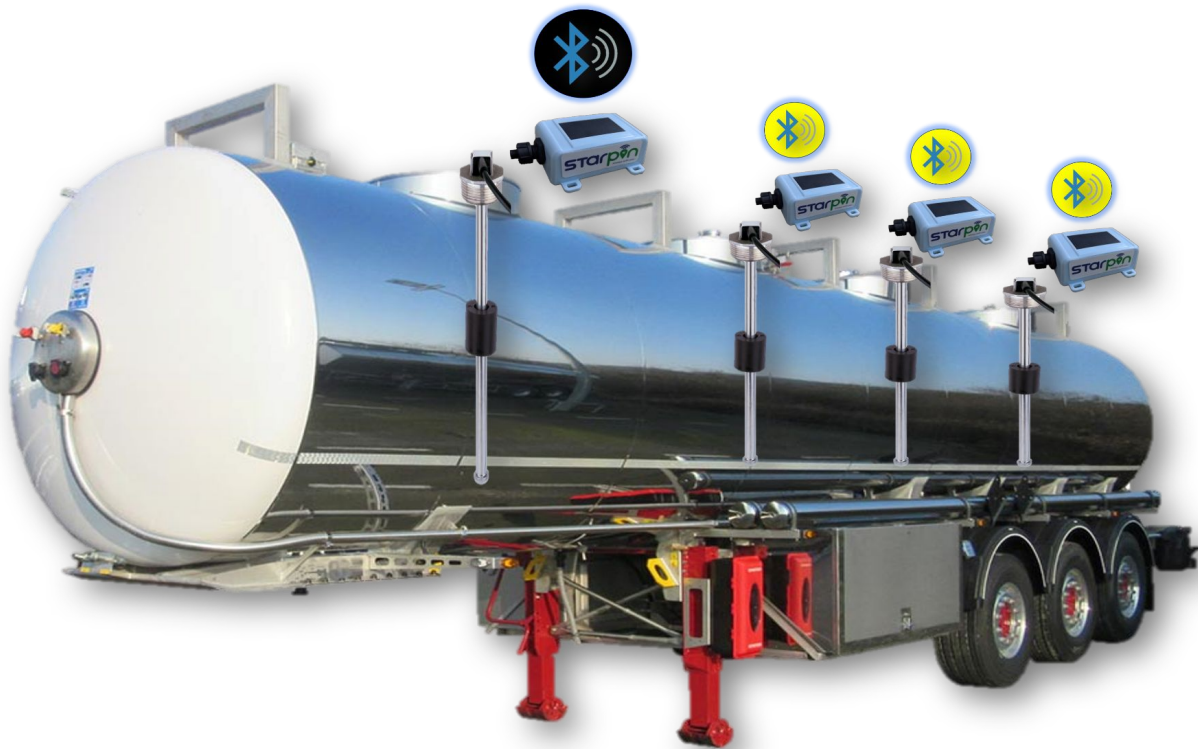
## Specifications

-  1 Analog Input & 1 Digital Grounding Input- Alarm Capable. Intrinsically safe: Class I Div 1 Group D Certified
-  Multi-sensor RS485 deployment /UART Modbus, I2C
-  Cat-M1LTE/NBIoT. Multi-carrier Sim: Verizon, At&t, Sprint & T-Mobile. Global compatibility Option.
-  **Globalstar** Optional cellular communication with satellite fallback.
-  GPS enabled for mobile asset
-  Integrated temperature & barometric pressure sensor
-  24/7 access to data on LevelCon Cloud or local SCADA
-  3x AA battery with optional solar power assistance



### MTM System

The MTM is designed for simple, reliable and accurate data aggregation from mobile liquid delivery vehicles. Utilizing our time-tested F100 remote monitor or StarPin asset tracker the MTM System delivers transport tank liquid levels via a C1D1 magnetostrictive sensors whenever the vehicle is stationary. The integrated GPS module provides the exact location of the vehicle using Google Maps. A built in or remotely mounted display shows the driver the precise amount of product in each compartment to help prevent an overfill event. If the vehicle has an on board pump and/or meter, the MTM will automatically detect the meter's pulse data and begin recording the flow rate. Once the delivery or pickup is complete, the monitor will wirelessly transmit the transaction data to our LevelCon Web Portal, providing the exact location and transaction details for immediate billing.



### Magnetostrictive Vertical Float Sensor

This all-purpose continuous liquid level transmitter can be used to measure fluid levels in virtually any sized tank. It is compatible with nearly any fuel, lube and multiple chemicals. The magnetostrictive sensor has great accuracy and the probe length is customized according to customer's requirements. This hardy stainless steel sensor is C1D1 rated and is ideal for hazardous fluids. Its rugged construction makes it the perfect choice for mobile tank monitoring.

